

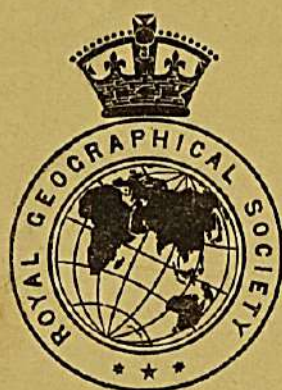
THE CENTRAL TIAN-SHAN MOUNTAINS

1902-1903

BY DR. GOTTFRIED MERZBACHER

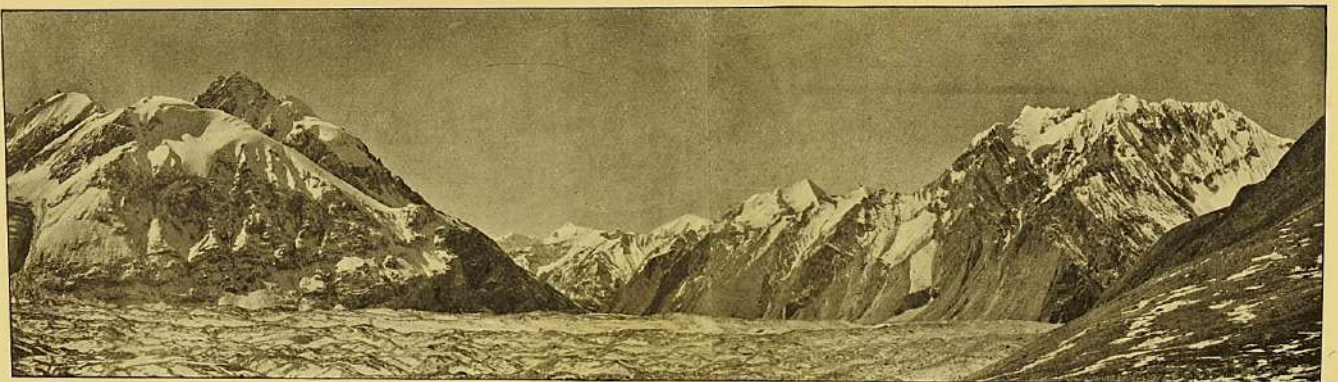
PUBLISHED UNDER THE AUTHORITY OF THE
ROYAL GEOGRAPHICAL SOCIETY

Inv. 37206



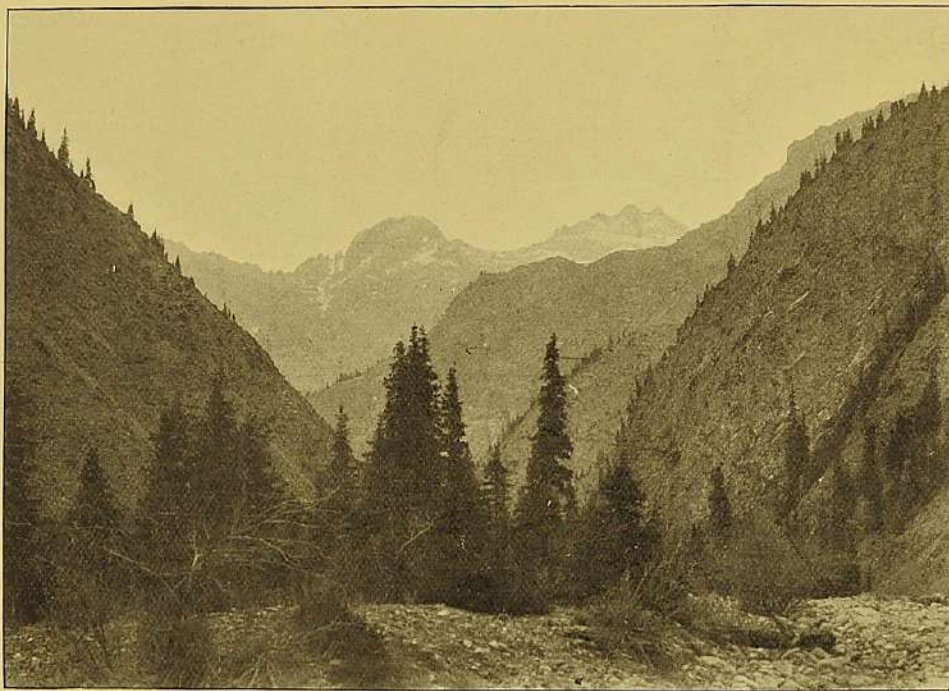
LONDON
JOHN MURRAY, ALBEMARLE STREET, W.

1905



JIPARLIK GLACIER, TAKEN FROM NEAR THE MUSART PASS (ABOUT 11,500 FT.).

[To face p. 90.]



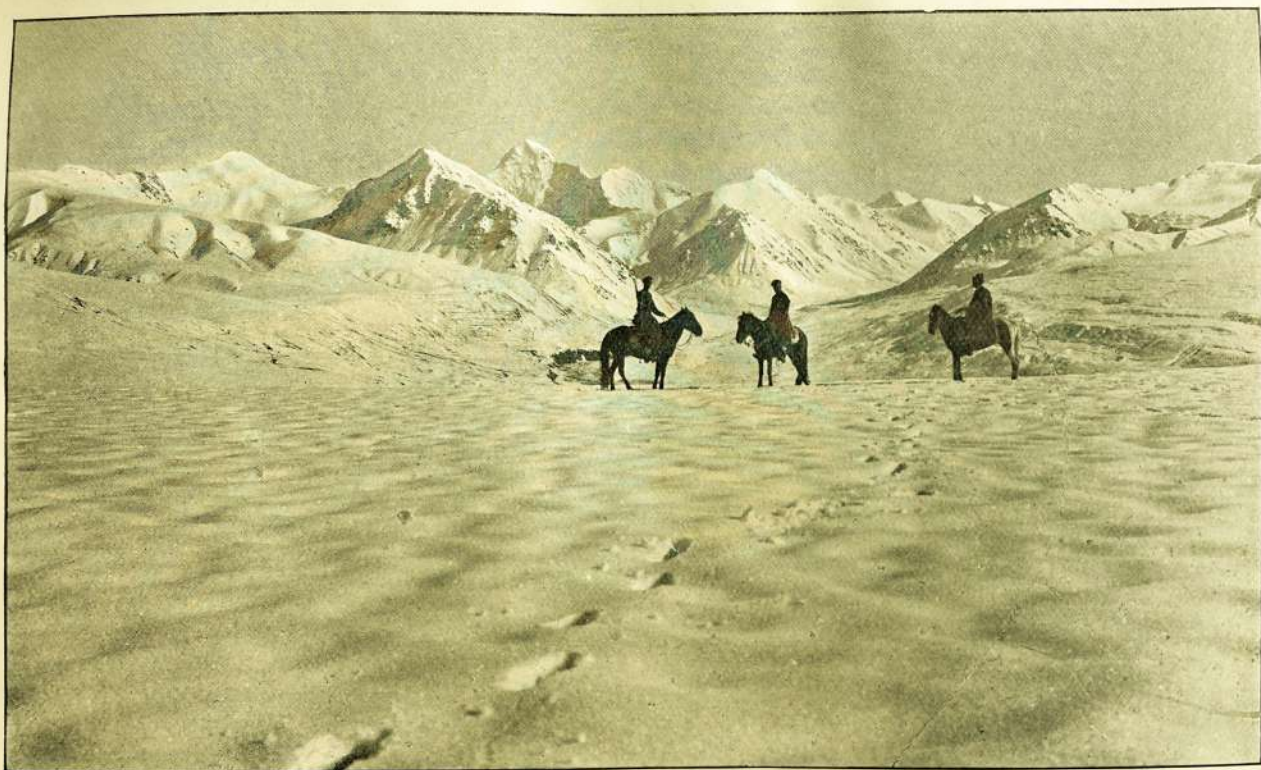
IN THE UPPER TEREK VALLEY (KHALYK-TAU).

[To face p. 134.



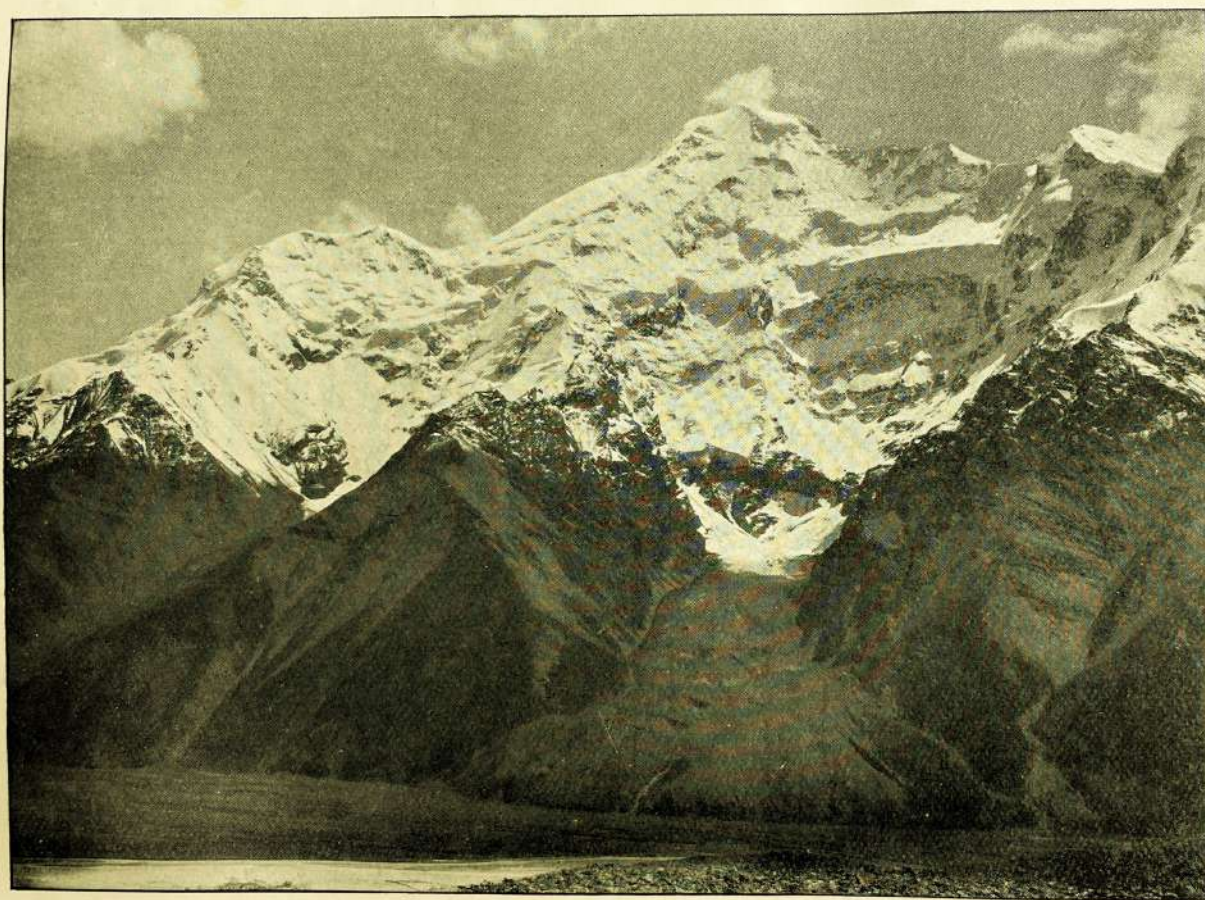
TELEPHOTOGRAPHIC VIEW OF KULU-TAU, TAKEN FROM A POINT (ABOUT 11,000 FT.) IN THE MIDDLE
COURSE OF THE SARY-JASS VALLEY. DISTANCE ABOUT 40 MILES.

[To face p. 62.]



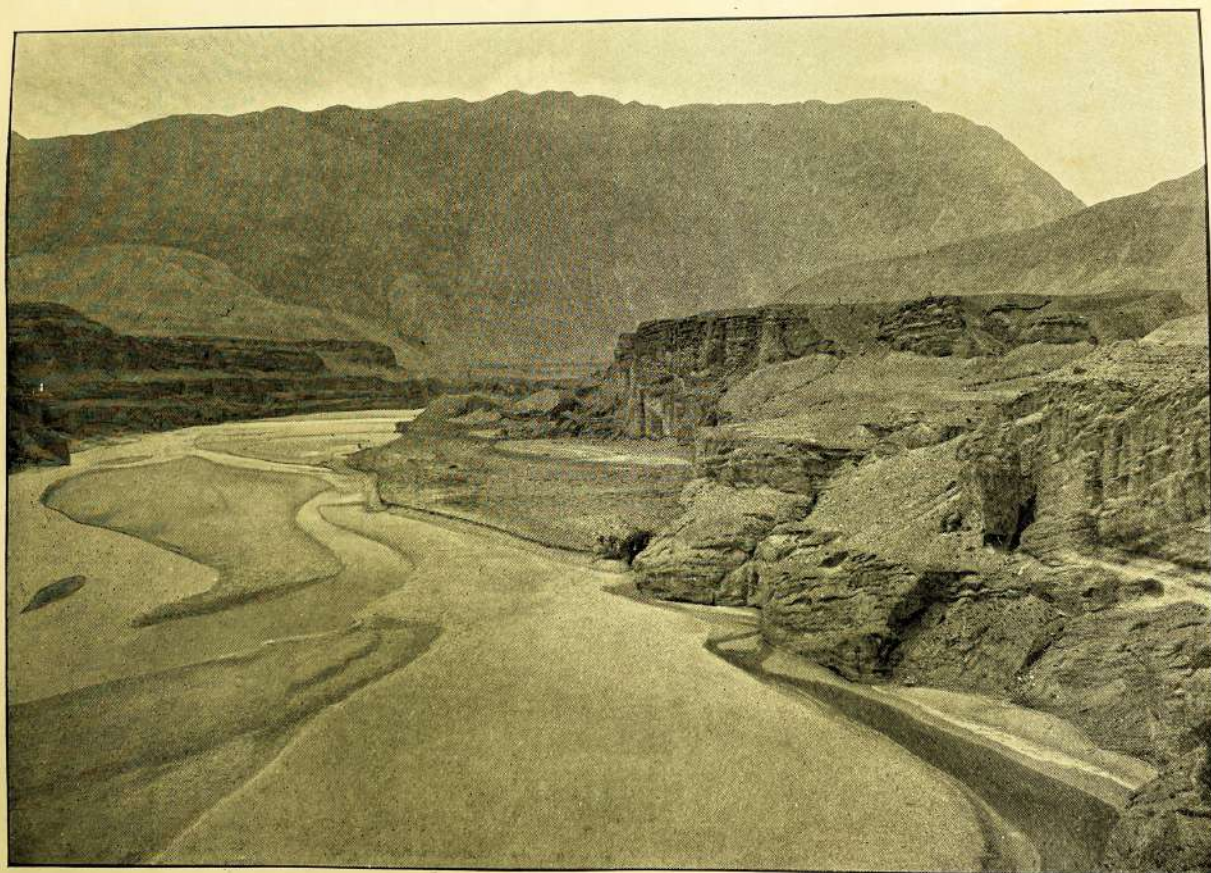
VIEW FROM A PLATEAU BETWEEN THE SARY-JASS AND TYS-ASHU VALLEYS (ABOUT 10,500 FT.), UP THE TYS-ASHU VALLEY TO A HUGE PEAK, STANDING IN THE SOUTHERN BORDER-RANGE OF THE INLYCHEK VALLEY.

[To face p. 64.



PEAK (ABOUT 21,300 FT.) IN THE SOUTHERN BORDER-RANGE OF THE INYLCHEK VALLEY, TAKEN FROM
OPPOSITE, FROM BELOW THE TYS-ASHU PASS.

[To face p. 66.]



ISSUE OF KUM-ARYK FROM ITS GORGE.

[To face p. 148.]