

THE EPIC OF MOUNT EVEREST

BY

SIR FRANCIS YOUNGHUSBAND

K.C.S.I., K.C.I.E.

FIRST CHAIRMAN OF THE MOUNT EVEREST COMMITTEE OF THE
ROYAL GEOGRAPHICAL SOCIETY AND THE ALPINE CLUB

ILLUSTRATED

LONDON

EDWARD ARNOLD & CO.

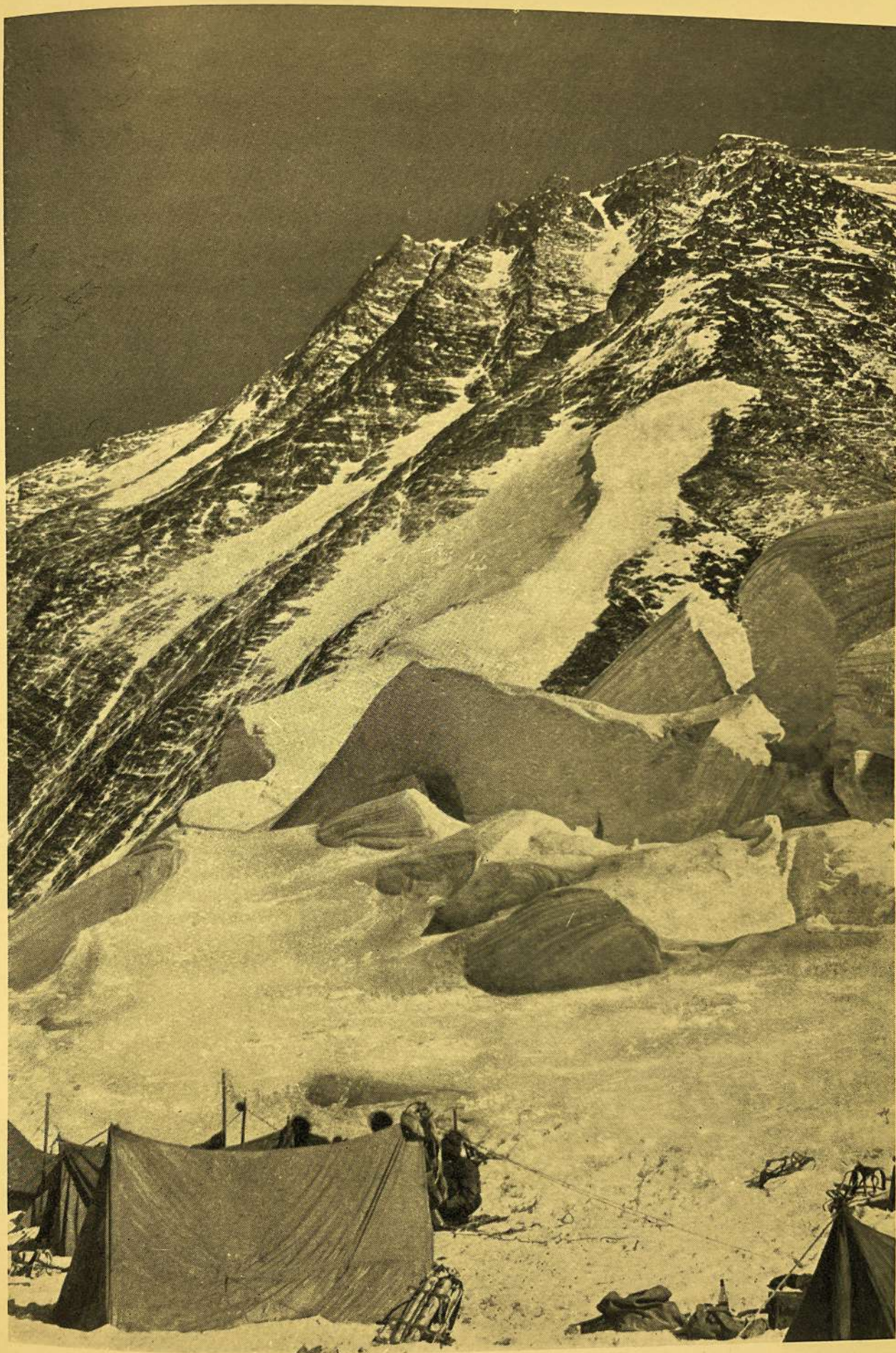
[All rights reserved]



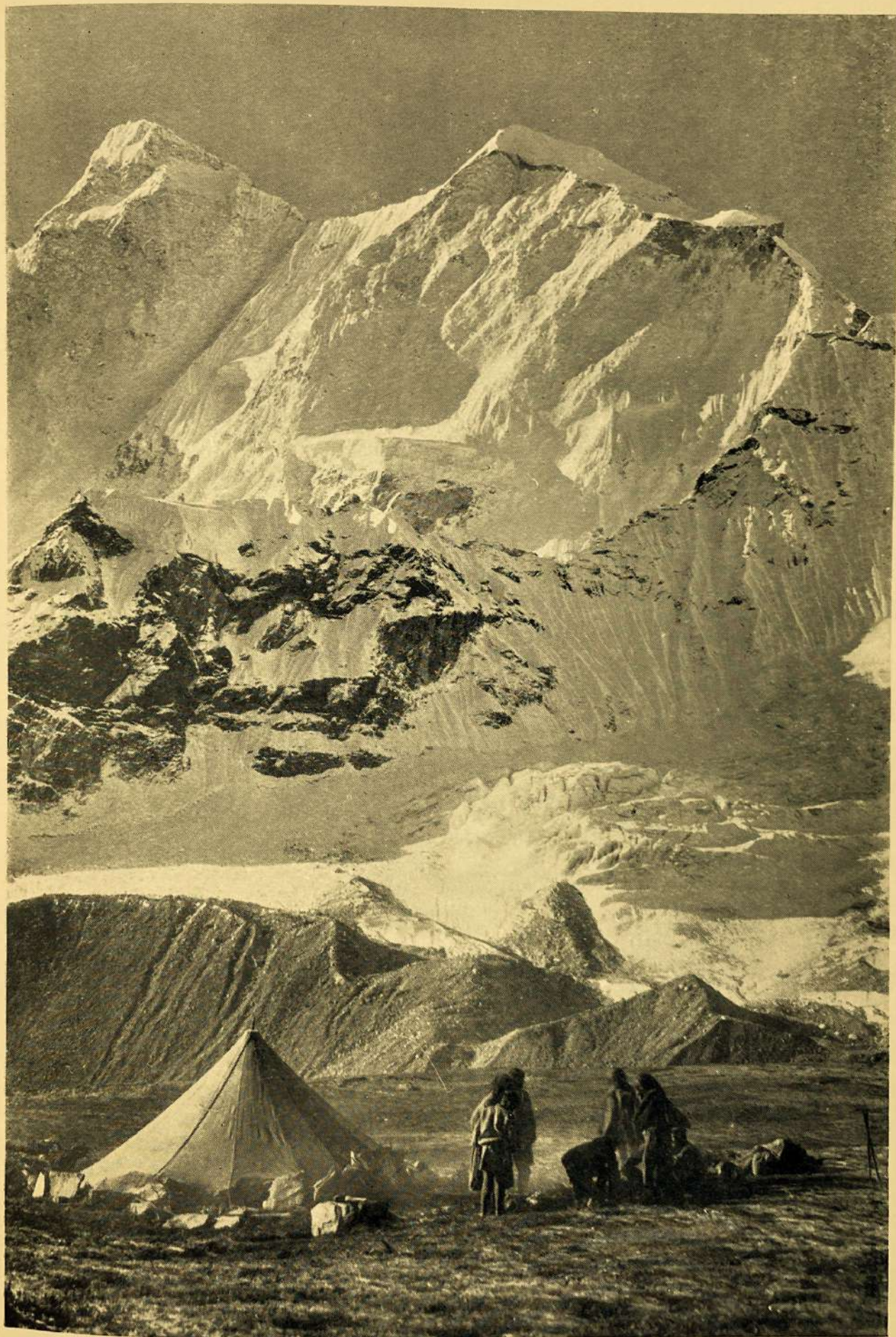
MONT EVEREST (VU DU GLACIER DE RONGBUK, DISTANCE NORD-OUEST : 9 MILLES).



SERACS, EAST RONGBUK GLACIER, ABOVE CAMP II.



NORTH COL AND NORTH-EAST SHOULDER OF MOUNT EVEREST.



CLIFFS OF CHOMOLÖNZO FROM CAMP AT PETHANG RINGMO.