

THE EPIC OF MOUNT EVEREST

BY

SIR FRANCIS YOUNGHUSBAND

K.C.S.I., K.C.I.E.

FIRST CHAIRMAN OF THE MOUNT EVEREST COMMITTEE OF THE
ROYAL GEOGRAPHICAL SOCIETY AND THE ALPINE CLUB

ILLUSTRATED

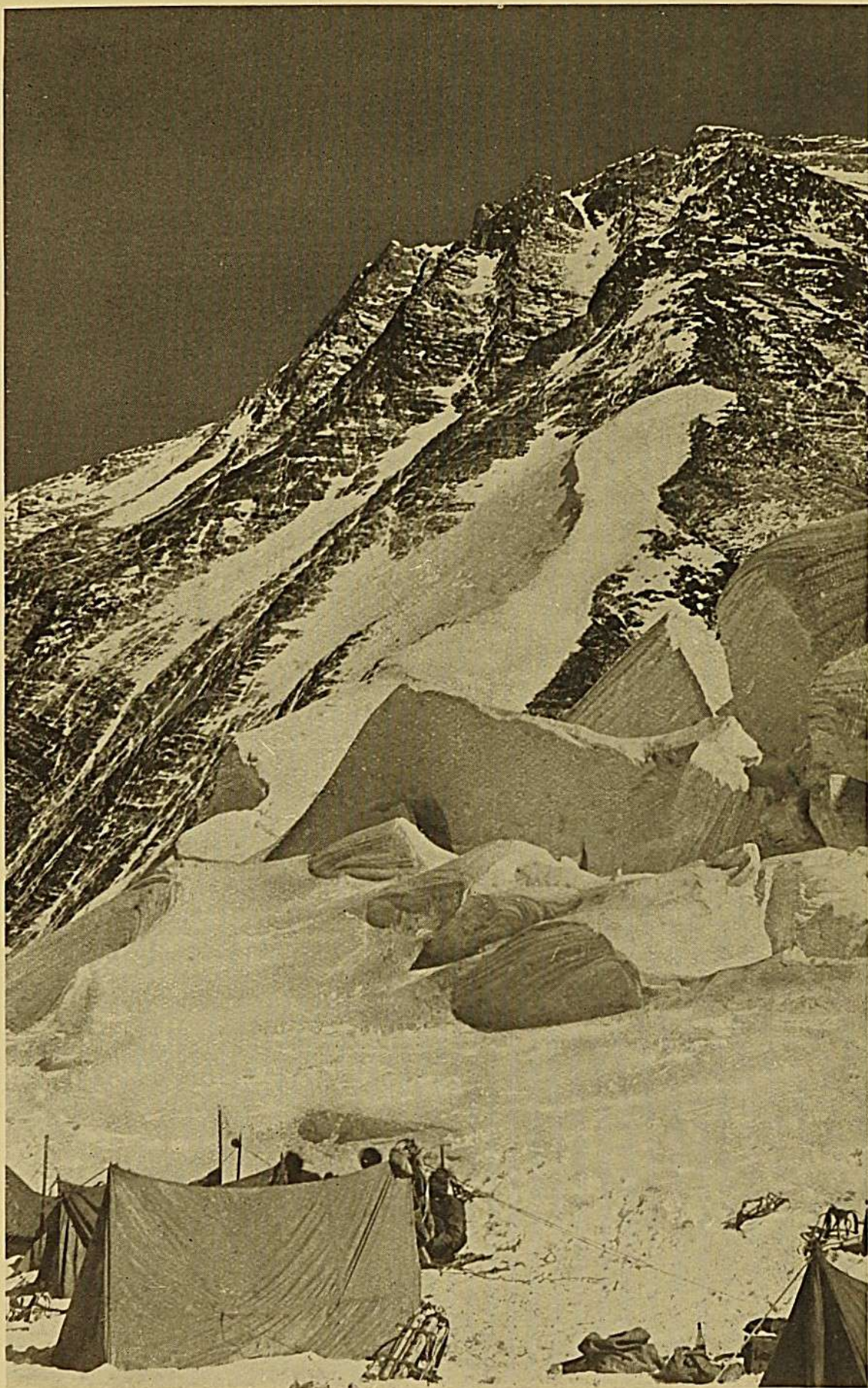
Inv. 1614



LONDON

EDWARD ARNOLD & CO.

[All rights reserved]



NORTH COL AND NORTH-EAST SHOULDER OF MOUNT EVEREST.



CLIFFS OF CHOMOLÖNZO FROM CAMP AT PETHANG RINGMO.



COLONEL NORTON AT 28,000 FEET.



THE ROUTE TO THE NORTH COL.



MALLORY AND NORTON.